

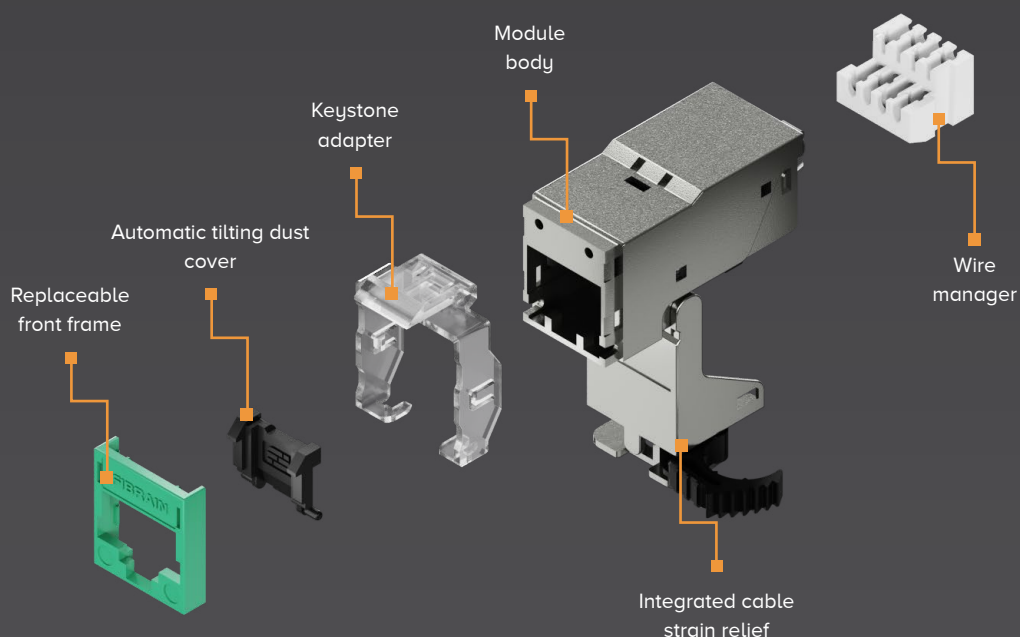
**FIBRAIN** ®

# NEW FAMILY OF FIBRAIN RJ45 CONNECTION MODULES

wide range of applications  
saving space in the server room  
quick and easy installation

# Modern design

The modular design offers a number of features that make the solution unique



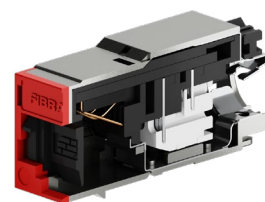
## Front frame

Snap-on front frame offered in various colors for easy identification – color coding. Due to its replaceable option, new features can be easily added to the entire module in the future. The automatic tilting dust cover inside the frame protects against the ingress of dust into the module. Its integration with the module makes it much easier to use.

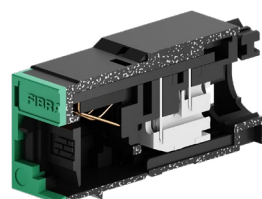


## Module housing

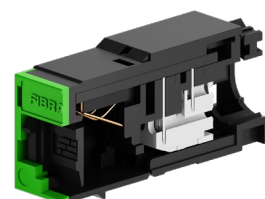
Module body made in 3 variants depending on the type. Solid die cast for shielded modules, plastic and metal doped plastic for unshielded modules (Cat. 6<sub>A</sub>).



**DIE CAST  
SHIELDED**



**METAL DOPED PLASTIC  
UNSHIELDED**



**PLASTIC  
UNSHIELDED**

# Main features



**A wide range of applications is available up to 10 Gbs in a full 100m channel**

There is a new family of RJ45 connection modules in the range of components **from Cat.5e to Cat. 6<sub>A</sub>** in **both shielded and unshielded versions**. The **operation of all applications is up to 10Gbs** in accordance with EN50173, ISO1180 and ANSI / TIA568.0



**Performance proven by certificates**

The new connection modules meet all criteria set by the latest editions of the applicable **CENELEC, ISO / IEC and TIA** standards with a large margin. The above has been confirmed by independent certification laboratories.



**Compact dimensions – more rack space**

The reduced module dimensions ensure **maximum port density up to 48 ports per 1U**.



**IDC technology**

The most reliable connection method is based on **special contact blades cutting the sheath of the stranded cable** to get the contact with the copper wires.

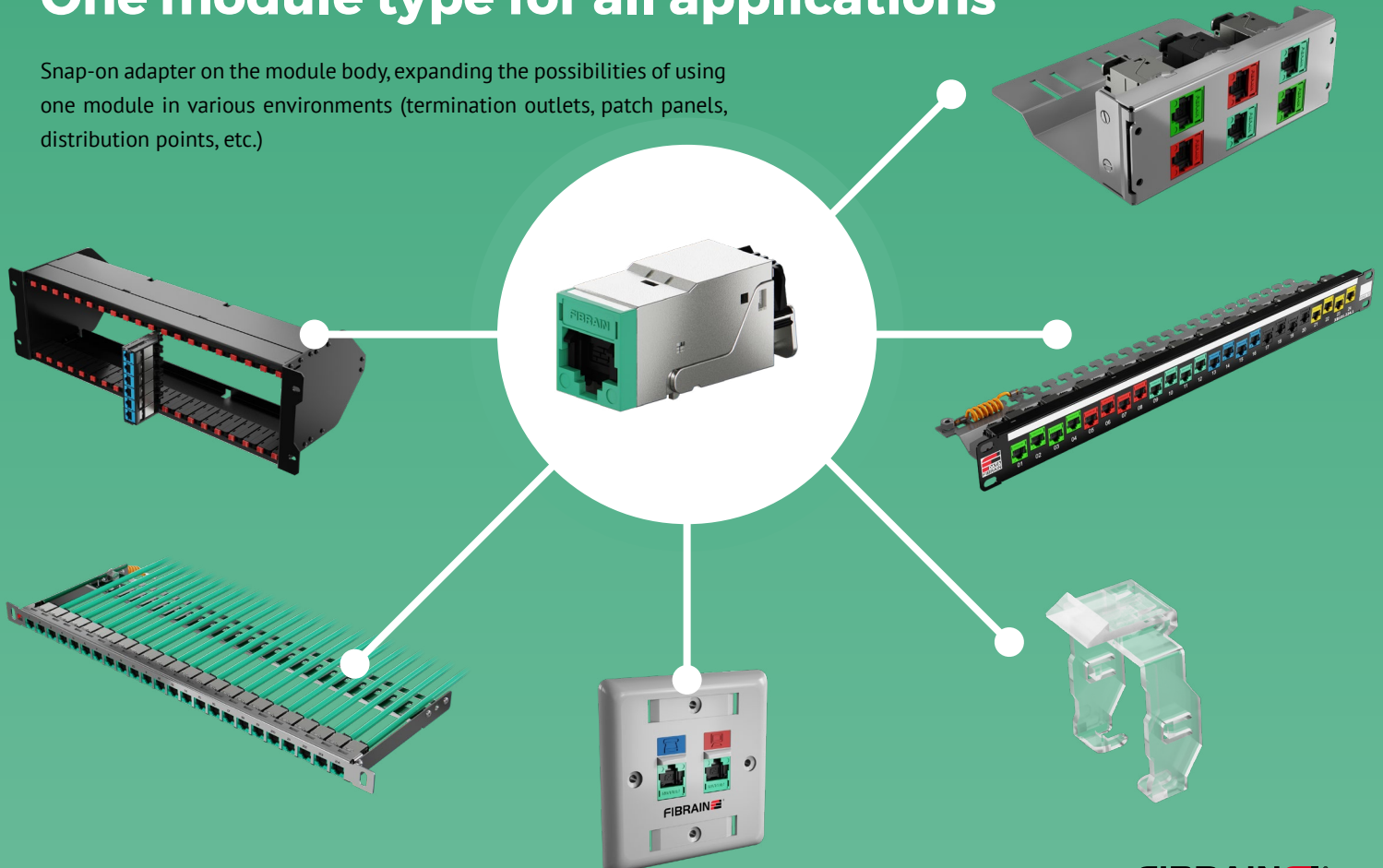


**Ease termination = saving installation time**

The solution is based on the wire manager as an external element which efficiently speeds up the installation process. **The visible 568A / 568B connection diagram makes the installer's job easier**. The use of ato on integrated cable strain relief fixing cable to the module housing not only provides protection of the connection zone against loss of contact but also simplifies work and saves time.

## One module type for all applications

Snap-on adapter on the module body, expanding the possibilities of using one module in various environments (termination outlets, patch panels, distribution points, etc.)



## Contact us

### **FIBRAIN Sp. z o.o.**

Rogoznica 312  
36-060 Glogów Malopolski  
Poland

phone: (+48) 17 866-08-14  
fax: (+48) 17 866-08-11  
e-mail: [info@fibrain.com](mailto:info@fibrain.com)

### **FIBRAIN Mexico**

Paseo de la Reforma 250 / Piso 9  
Esquina c/Niza, Col. Juárez  
Del. Cuauhtémoc  
México D.F. 06600

phone: (+52) 55 3600 7546  
e-mail: [info@fibrain.com.mx](mailto:info@fibrain.com.mx)

[www.fibrain.com](http://www.fibrain.com)

