

Type:	Wall mounted distribution cabinet IFDT-B0	
Reference:	IFDT-B0-x , see ordering information	REV: 1.2
Date:	06.02.2013	WM
Modification:	02.04.2021	DP

Distribution solution

FIBRAIN IFDT-B0-x wall mounted distribution box



DESCRIPTION:

- Available in 2 versions for 24, 48 users
- Two-section design- line cable and subscriber
- Prepared to install splitters, cables and micropipes
- Holder for identification card
- Cable central member holder
- Cabinet sections secured with lock
- Optional cable reserve frame
- Mounting the cabinet with a use of nail expansion anchors

TECHNICAL SPECIFICATION:

Technical data	IFDT-B0-24-x	IFDT-B0-48-x
Maximum splice quantity	48	48
Maximum adapter quantity	24	48
Maximum cable diameter [mm]	18,6	18,6
Dimensions (w)x(h)x(d) [mm]	390x315x110(175)*	390x315x110(175)*
Material	Powder painted steel	

*cabinet depth with cable reserve frame installed

ADDITIONAL EQUIPMENT:

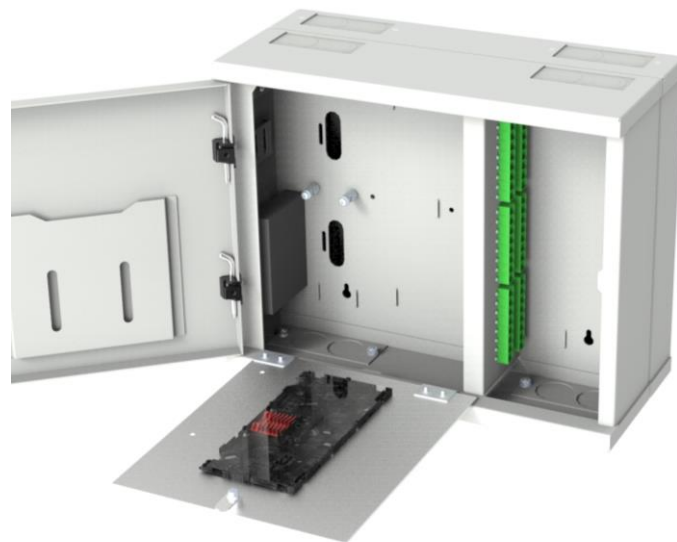
Cable reserve frame	SZB-A-IFDT-B0
Splice cassette for 12 splices	SCM-A-12H
Splice cassette for 24 splices	SCM-A-24H
Cable gland	DL16

Type:	Wall mounted distribution cabinet IFDT-B0	
Reference:	IFDT-B0-x , see ordering information	REV: 1.2
Date:	06.02.2013	WM
Modification:	02.04.2021	DP

Distribution solution



Subscriber section



View of line cable part



Optional cable reserve frame mounted on the rear part of the cabinet

Type:	Wall mounted distribution cabinet IFDT-B0	
Reference:	IFDT-B0-x , see ordering information	REV: 1.2
Date:	06.02.2013	WM
Modification:	02.04.2021	DP

Distribution solution

ORDERING INFORMATION:

IFDT-B0X-YY-AA-BC-DE-FGHI-J

X – Cable reserve frame	0 – none Z – equipped
YY – Adapter panel type	24 – for 24 adapters 48 – for 48 adapters
AA –Adapters quantity	0-48
B – Adapters class	0 – none 1 – Standard One-Piece (or Standard for E2000) 2 – Premium Super One-Piece 3 – Premium One-Piece with internal shutter
C – Adapters type	0 – none 1 – SC 2 – SC APC 3 – E2000 4 – E2000 APC 5 – LC DX 6 – LCA DX
D – Cassettes quantity	1-3
E – Cassette type	1 – SCM-A-12H 2 – SCM-A-24H
F - Splitters quantity:	0 – 4
G – Splitter termination	0 – not terminated 1 – terminated with connectors in accordance with adapter standard
H – Splitter housing	1 – Alubox housing 2 – Blackbox housing
I – Split of splitter:	0 – none, 1 – 1:2, 2 – 1:4, 3 – 1:8; 4 – 1:16
J – Cable glands quantity	0-8

Example:

IFDT-B0Z-24-4812-32-1125-0

IFDT-B0 distribution cabinet with panel for 48 adapters equipped in 48 adapters SCA Standard, 3 splice trays for 24 splices, splitter 1x32 in BlackBox housing with connectors, cable reserve frame.

This document and the statements contained in it, are not intended for customers within the meaning of Civil Code. The information submitted in this document is to our knowledge and belief true at the time of issue, however, we do not assume any liability whatsoever for its accuracy, and completeness. This document is for informational purposes on an "as is" basis only, and Fibrain reserves the right to change its contents at any time without prior notice. The specification cannot in any case be considered an offer within the meaning of the Civil Code and is not contractually valid unless specifically authorized by Fibrain. Before using this product, its buyer and/or user has to make sure that it is suitable for the intended use. All liability issues related to this product are subjected to the seller's separate Terms of Sale or the terms and conditions agreed with the Fibrain representative or distributor.