

Type:	HD Pivot swivel patch panel	
Ref:	PSR-HD-A0-x, see ordering information	REV: 1.4
Date:	10.10.2022	DP
Modification:	04.10.2024	DP

## Distribution solutions

### Pivot swivel patch panel with side access **PSR-HD-A0**



#### DESCRIPTION:

- SCM-A splice cassettes
- Splice capacity:
  - 96 splices in 1U (6 adapter holders)
  - 192 splices in 2U (12 adapter holders)
  - 288 splices in 3U (18 adapter holders)
- Patch panel installation on back or front rack profile
- Panel available in rotating left or right side of patch panel (depends on version)
- Possibilities of termination cables on side or back of patch panel
- Hinged flap of patch panel protects patchcords from damages
- 2U and 3U patch panels can be combined with RT-01 tube divider

#### TECHNICAL SPECIFICATION:

Technical data	PSR-HD-A0-01/B1	PSR-HD-A0-02/B2	PSR-HD-A0-03/B3
Height	1U	2U	3U
Width	19"		
Depth in cabinet [mm]	250		
Overall depth [mm]	300		
Max. number of adapters	72	144	216
Max. number of splices	96	192	288
Max. number of splice trays	4	8	12
Max. line cable diameter [mm]	12		
Casing material	powder painted steel		

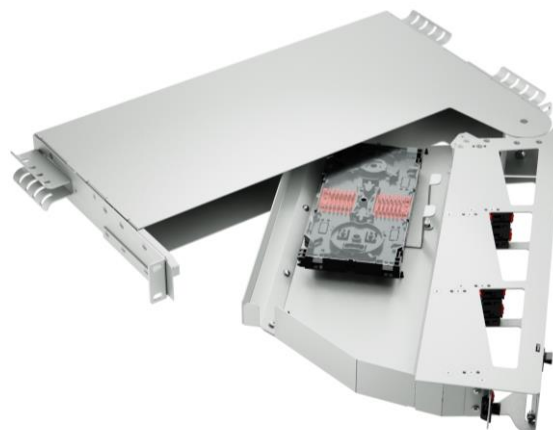


Type:	HD Pivot swivel patch panel	
Ref:	PSR-HD-A0-x, see ordering information	REV: 1.4
Date:	10.10.2022	DP
Modification:	04.10.2024	DP

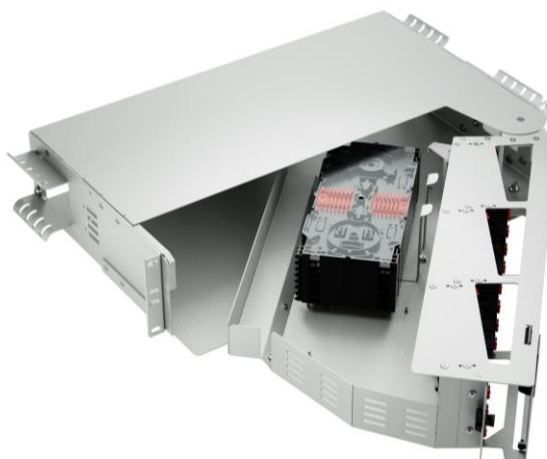
## Distribution solutions

Patch panel with embeddable RT-01 tube separator

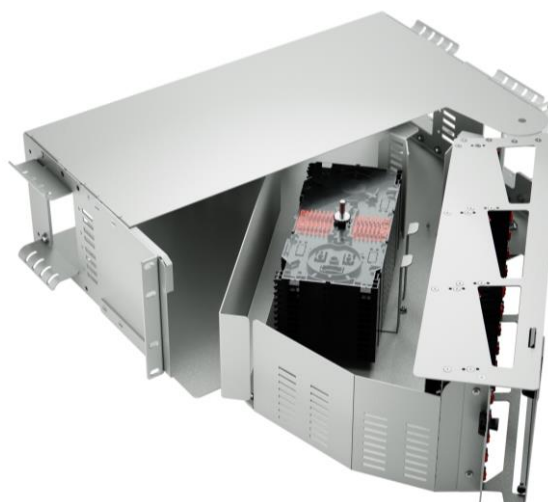
Patch panel with embeddable PS-TH-12-05 tube separator



View of 1U patch panel



View of 2U patch panel



View of 3U patch panel

Type:	HD Pivot swivel patch panel	
Ref:	PSR-HD-A0-x, see ordering information	REV: 1.4
Date:	10.10.2022	DP
Modification:	04.10.2024	DP

## Distribution solutions

### ORDERING INFORMATION:

**PSR-HD-A0-XX-A-BBC-DDDEFG-HHHIJKLL-MMM-N**

Ordering syntax for equipped PSR-HD-A0

**XX – Height variant**

01 – 1U (grey RAL7035)  
 02 – 2U (grey RAL7035)  
 03 – 3U (grey RAL7035)  
 B1 – 1U (black RAL9005)  
 B2 – 2U (black RAL9005)  
 B3 – 3U (black RAL9005)

**A - Shelf opening direction:**

R – right  
 L – left

**B – Splice tray quantity**

1-12

**C – Cassette type**

1 – SCM-A-12H  
 2 – SCM-A-24H

**DDD – Adapters qty**

000 - 216

**E – Adapter class**

1 – Standard One-Piece  
 2 – Premium One-Piece with internal shutter

**F – Adapter type (flangeless only)**

1 – SC  
 2 – SCA  
 3 – E2000  
 4 – E2000 APC  
 5 – LC  
 6 – LC APC

**G – Transmission**

1 - SM  
 2 – MM (beige @SC, black @E2000)  
 3 – MM OM3 (aqua @SC)  
 4 – MM OM4 (violet @SC)

**HHH – Pigtails quantity**

000-288

**I – Fiber type**

D – G.657A1  
 E – G.657A2  
 H – MM OM1  
 I – MM OM2  
 K – MM OM3  
 L – MM OM4

**J – Connector type**

1 – SC  
 2 – SCA  
 3 – E2000  
 4 – E2000 APC  
 5 – LC  
 6 – LC APC

**K – Pigtails grade**

G - Gold

**LL – Colour identification:**

01 – for pigtails with yellow 0.9 mm buffer  
 02 - for pigtails with orange 0.9 mm buffer  
 03 - T TELECOM (acc. to IEC60304)  
 04 - T1 TELECOM (acc. to 60304/tab. 3 & ZN-11/TPSA-005-02)  
 05 - T2 TELECOM (acc. to EIA 598A)  
 06 - D DATACOM (acc. to DIN VDE 0888 & IEC 60304)  
 07 - D1 DATACOM (acc. to IEC 60304, TIA/EIA 598-A, TIA/EIA 598-C)  
 08 - for pigtails with aqua 0.9 mm buffer  
 09 – for pigtails with green 0.9mm buffer  
 10 – for pigtails with violet 0.9mm buffer  
 11 – for pigtails with blue 0.9mm buffer

**MMM – Splice sleeve quantity**

000 - 288

**N – Cable tube divider**

0 – without  
 1 – PS-TH-12-05 in equipment, mounted  
 2 – RT-01-12-05 in equipment, not mounted

This document and the statements contained in it, are not intended for customers within the meaning of Civil Code. The information submitted in this document is to our knowledge and belief true at the time of issue, however, we do not assume any liability whatsoever for its accuracy, and completeness. This document is for informational purposes on an "as is" basis only, and Fibrain reserves the right to change its contents at any time without prior notice. The specification cannot in any case be considered an offer within the meaning of the Civil Code and is not contractually valid unless specifically authorized by Fibrain. Before using this product, its buyer and/or user has to make sure that it is suitable for the intended use. All liability issues related to this product are subjected to the seller's separate Terms of Sale or the terms and conditions agreed

Type:	HD Pivot swivel patch panel	
Ref:	PSR-HD-A0-x, see ordering information	REV: 1.4
Date:	10.10.2022	DP
Modification:	04.10.2024	DP

## Distribution solutions

*with the Fibrain representative or distributor.*