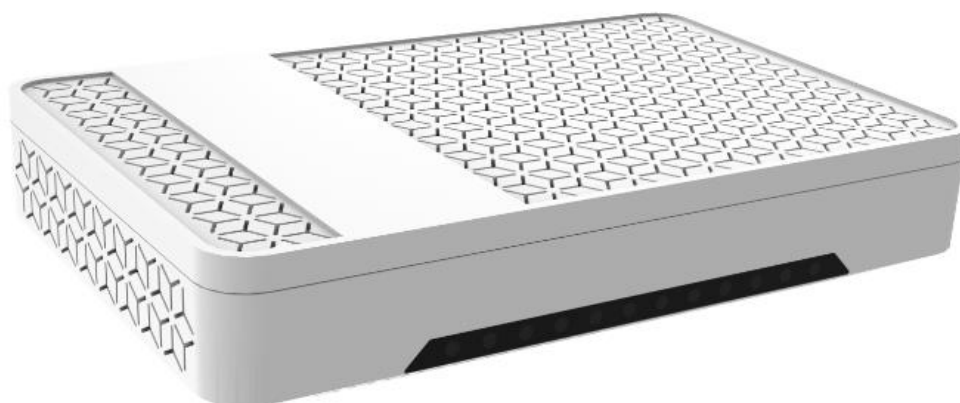


FIBRAIN FB-4GP**GPON ONT****4x10/100/1000Mbps Ethernet PoE PSE**

- Optical WAN interface in GPON technology
- 4 x 10/100/1000Mbps LAN interface with Auto MDI-MDIX
- Works in SFU (Layer 2) or HGU (Layer 3) mode
- 4 x PoE PSE (Power Sourcing Equipment) – deliver power to compliant network devices
- Power via 12-54V AC/DC power supply (54V required when using PoE PSE feature)
- Managed via Web/XML/OMCI
- Operates in the temperature range of 0 ~ 60 degrees Celsius
- Compatible with OLTs of all most popular manufacturers



Company registration data:
FIBRAIN sp. z o.o.
36-062 Zaczernie 190F
Poland

Mailing address:
FIBRAIN SP. Z O.O.
Centrum Logistyczne,
Produkcyjno-Laboratoryjne w SSE-2
ul. Innowacyjna 14
36-060 Glogow Malopolski, Poland

tel.
fax.
e-mail:
www

+48 17 86 60 800
+48 17 86 60 810
info@fibrain.pl
www.fibrain.pl

Device description

FB-4PG is an innovative product designed for operators of fiber optic broadband networks. Designed from the ground up with end users in mind, it provides them with four Ethernet ports with support for Power Over Ethernet PSE (IEEE802.3at) technology. This gives the possibility of direct powering of network devices connected to the LAN ports that support PoE power supply (such as VoIP phones, network switches, wireless network access points, etc.)

The device uses a single optical fiber to connect to the central device of the Internet provider. The user connects to the device using a cat.5 (or higher) network cable. The built-in 4-port switch allows direct connection of up to four network devices. Device can be powered using one of two options: using a 12-36V power supply (if we do not plan to use PoE PSE functionality or using a 54V power supply (if we plan to use PoE PSE)

WAN interface is fully compliant with the ITU-T G984 standard. Hardware functionalities combined with the software installed in the device enable network traffic control at the L2 layer level (VLAN, QoS, IGMP Multicast) or network traffic termination at the L3 layer level (router/nat).

Management

The device can be managed from the OLT device using the OMCI stack. An alternative method is configuration via an XML file (provisioning). The third method is configuration using the web interface. Such numerous configuration methods ensure seamless and quick integration with the network operator's systems and accelerate and facilitate the process of installing the device in the target location.

Software features

GPON

- ITU-T G.984 compliant
- ITU-T G.988 (OMCI Model)
- Dying gasp
- Dynamic bandwidth allocation
- AES Encryption of US/DS traffic Forward Error Correction (FEC)
- Support for 32 T-CONTs and 256 GEM Ports

QoS

- Compliant with BBF TR-156
- Compliant with BBF 247 test
- Bandwidth limitation for incoming and outgoing traffic
- Packet classification based on COS, DSCP

Multicast

L3

- IGMP Snooping
- IP HOST (management)
- PPPoE Client
- 802.1q
- DHCP Server/Client/Relay
- NAT & PAT
- DNS Relay
- IGMP Proxy i Snooping
- VPN Passthrough
- SNMP
- Port Forwarding
- UPnP
- Firewall

L2

- IEEE 802.1D
- IEEE 802.1Q i IEEE 802.1P
- VLAN Translation
- VLAN Filter
- Up to 10 VLANs support
- Access | Trunk | Native port
- Storm-Control
- QinQ (Transparent and End-To-End)

Hardware specification



Company registration data:
FIBRAIN sp. z o.o.
36-062 Zaczernie 190F
Poland

Mailing address:
FIBRAIN SP. Z O.O.
Centrum Logistyczne,
Produkcyjno-Laboratoryjne w SSE-2
ul. Innowacyjna 14
36-060 Glogow Malopolski, Poland

tel.
fax.
e-mail:
www

+48 17 86 60 800
+48 17 86 60 810
info@fibrain.pl
www.fibrain.pl

Flash memory	128MB	Storage temperatures	-40~70°C
WAN interface	1 x GPON Port (SC/APC, BOSA) Class B+ Rx sensitivity -28dBm Rx overload -8dBm	Humidity	5~95 % (non condensing)
WAN speed	GPON: 2,5Gbps/1,25Gbps (DS/US)	Power	12V~54V DC (100W for PoE PSE)
LAN interface	4 x port 10/100/1000BASE-T (RJ-45) Auto-speed detection, Auto-MDI/ MDI-X	Power consumption	Up to 100W (PoE PSE in use) Up to 7W (none-PoE)
PoE PSE ports	4 x IEEE802.3at (90W total budget)	Other interfaces	Buttons: ON/OFF Reset
LED	POWER, PON, LOS, LAN1-LAN4	Dimensions (W x D x H)	225 mm x 48 mm x 142 mm
Operation temperatures	0 ~ 60°C		



Company registration data:
FIBRAIN sp. z o.o.
36-062 Zaczernie 190F
Poland

Mailing address:
FIBRAIN SP. Z O.O.
Centrum Logistyczne,
Produkcyjno-Laboratoryjne w SSE-2
ul. Innowacyjna 14
36-060 Glogow Malopolski, Poland

tel.
fax.
e-mail:
www

+48 17 86 60 800
+48 17 86 60 810
info@fibrain.pl
www.fibrain.pl