

Type:	Uchwyt do montażu kaset	
Ref:	PST-AX-01-SCM-C-H	REV: 1.0
Date:	03.03.2025	DP
Modification:	-	-

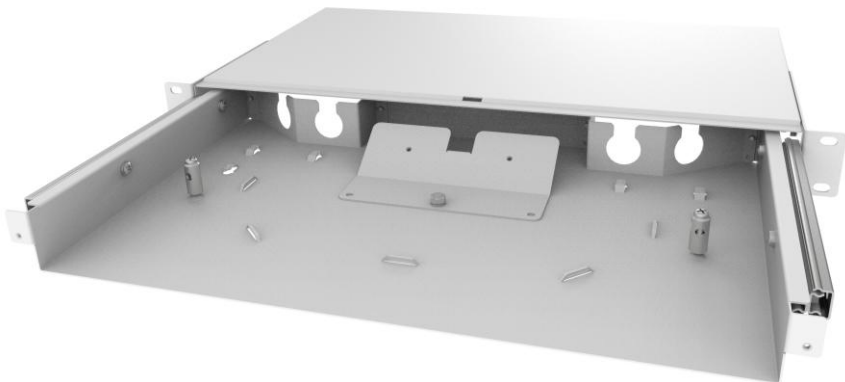
Distribution solutions

Fibrain set for installing SCM-C splice tray holder on PST 1U patch panels
FIBRAIN PST-AX-01-SCM-C-H



DESCRIPTION:

- Installation in the PST 1U patch panel drawer
- Allows mounting of the SCM-C-12H splice cassette holder



ORDERING INFORMATION:

PST-AX-01-SCM-C-H FIBRAIN SET FOR INSTALLING SCM-C SPLICE TRAY HOLDER ON PST 1U PATCH PANELS

This document and the statements contained in it, are not intended for customers within the meaning of Civil Code. The information submitted in this document is to our knowledge and belief true at the time of issue, however, we do not assume any liability whatsoever for its accuracy, and completeness. This document is for informational purposes on an "as is" basis only, and Fibrain reserves the right to change its contents at any time without prior notice. The specification cannot in any case be considered an offer within the meaning of the Civil Code and is not contractually valid unless specifically authorized by Fibrain. Before using this product, its buyer and/or user has to make sure that it is suitable for the intended use. All liability issues related to this product are subjected to the seller's separate Terms of Sale or the terms and conditions agreed with the Fibrain representative or distributor.